

Version 1.04

(08.12.2017)

# Installation manual

## Complete set active Sound incl. Sound Booster



VW Golf 7 TDI, GTD

---

## Content

General advice .....	2
Safety Instructions .....	3
References of legal regulations for operation .....	3
Notes .....	4
Installation instruction .....	5
Software .....	11

## General advice

While developing this product, your personal safety combined with the best operating service, modern design and an up-to-date production technique was especially taken into account.

Unfortunately, despite the utmost care injuries and/or damages might occur due to improper installation and/or use.

Please read the attached instruction manual completely with great care and keep it!

All articles of our production line pass through a 100 % check - for your safety and security.

We reserve the right to carry out technical changes which serve the improvement at any time.

According to each article and purpose, it is sometimes necessary to check each country's legal regulations before installing and starting the unit.

In case of guarantee claims, the device has to be sent back to the seller in the original packaging with the attached bill of purchase and detailed defect's description. Please pay attention to the manufacturer's return

requirements (RMA). The legal warranty directions are valid.

The guarantee claim as well as the operating permission becomes invalid due to:

- a) unauthorized changes to the device or accessories which have not been approved or carried out by the manufacturer or its partners*
- b) opening the device's frame*
- c) device's repairs carried out by one's own*
- d) improper use / operation*
- e) brute force to the device (drop, wilful damage, accident etc.)*

During installation, please pay attention to all safety relevant and legal directions. The device has only to be installed by trained personnel or similarly qualified people.

**Please limit on installation or function problems the troubleshooting to 0.5 hours for mechanical and 1.0 hours for electronic works.**

To avoid unnecessary work and to save costs, please send us immediately via the contact form Kufatec (<http://www.kufatec.de/shop/de/infocenter/>) a request to our technical support.

Please quote the following necessarily:

- Vehicle Identification Number
- Part number of the retrofit kit
- Detailed description of problems
- Already conducted operations

## Safety Instructions

Installation requires special knowledge.

Do not install the unit yourself. For safe and reliable installation, consult a dealer having special knowledge.

- *Never use bolts or nuts from the car's safety devices for installation. If bolts or nuts from the steering wheel, brakes or other safety devices are used for installation of the unit, it may cause an accident.*
- *Use the unit with a DC 12V negative ground car. This unit cannot be used in large trucks which use a DC 24V battery. If it is used with a DC 24V battery, it may cause a fire or accident.*
- *Avoid installing the unit in following places: - Where it would hinder your safe driving. - Where it could damage the car's fittings.*
- *This unit is only for use in the following vehicles. Only connections described within this instruction guide are allowed or required to use for installation.*
- *For damage impact caused by faulty installation, unsuitable connections in appropriate vehicles Kufatec GmbH & Co. KG assumes no liability.*
- *We advise you that these units process data out of the MOST - protocol from the vehicle. As the supplier of this device we don't know the overall system you are working with. If our device causes damage due to other changes made by to the vehicle Kufatec GmbH & Co. KG assumes no liability.*
- *Kufatec GmbH & Co. KG supplier do not guaranty the use of the product for changing's within a new vehicle series.*
- *If the car manufacturer's don't agree with the installation of our device by reason of warranty the Kufatec GmbH & Co. KG assumes no liability. Please check conditions and warranty before you begin the installation.*
- *Kufatec GmbH & Co. KG supplier reserves the right to change the device specifications without notice.*

**NOTE:** The road traffic has to have your full attention.

Telephone operations should only be done by suitable traffic and weather situations. The volume need to be set that you are still able to realise acoustic warn signals (Police, fire brigade).

- *Errors and changes excepted.*

## References of legal regulations for operation

Only use this unit in the intended domain.

If you use it in a foreign domain, if the unit is not installed properly, or if the unit will be reconstructed, the guarantee will expire.

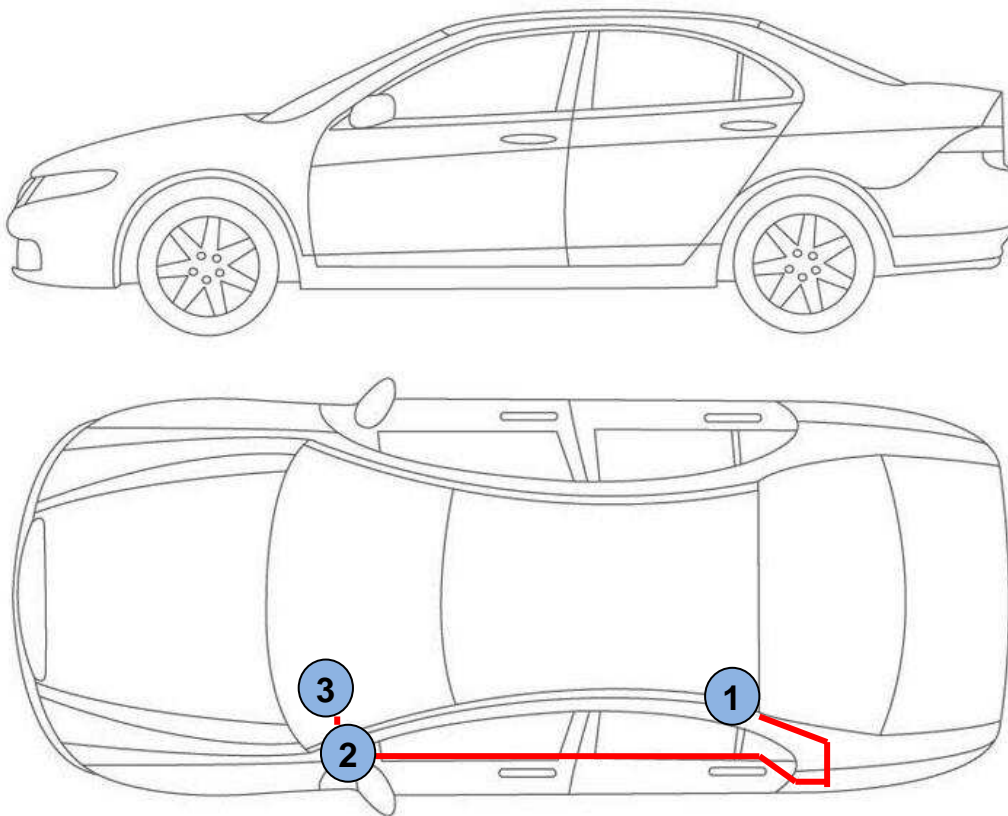
---

## Notes

**NOTE:** The use of a sound booster is not permitted without registration in the vehicle papers, in the area of the german StVZO. The noise emission of the vehicle is increased by this retrofit. The regulations of the StVZO must be observed. It is therefore recommended to ask for a specific registration option at the responsible TÜV/DEKRA office before retrofitting. Outside Germany, please observe the laws on vehicle licensing applicable in your country.

## Installation instruction

The diagram below shows the wiring and the position of the individual components.



Scheme

- 1 – External Sound generator incl. mounting plate**
- 2 – Control unit for engine**
- 2 – Sound Booster**
- 3 – Button**

First dismantle the release handle of the bonnet, therefore remove the securing clip from the handle and remove the covering of the A-column in the driver's footwell, Fig. 1

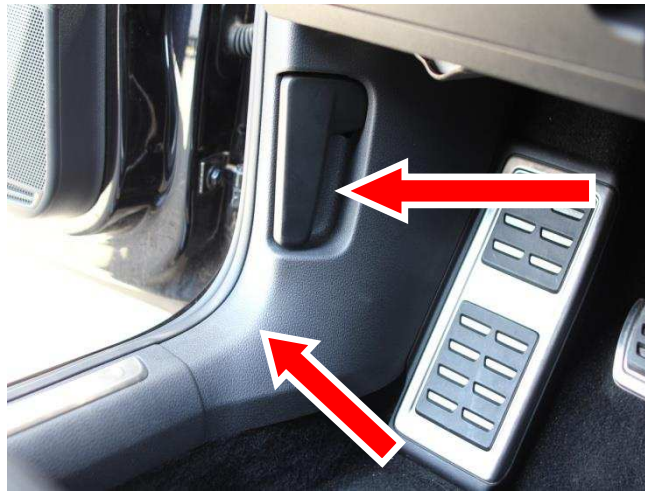


Fig. 1

Disconnect the 17pin (beige) plug from the junction and solder the lines for CAN High und Low as mentioned below, Fig 2 and 3

Can High (black/white)	-	Pin 1 (orange/black)
Can Low (black/yellow)	-	Pin 2 (orange/brown)
isolate the connections afterwards.		



Fig. 2

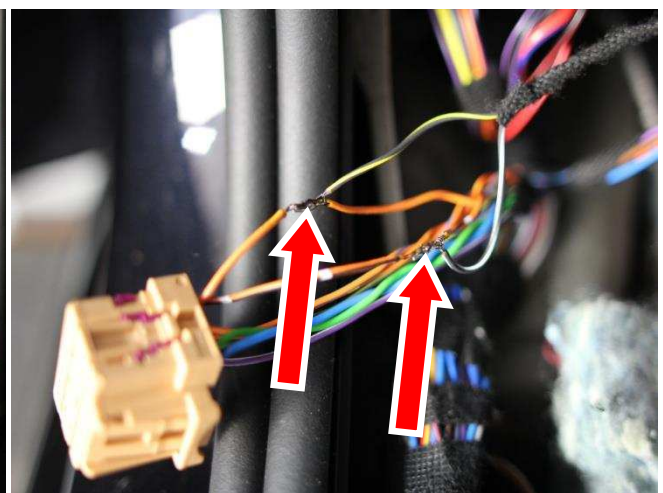
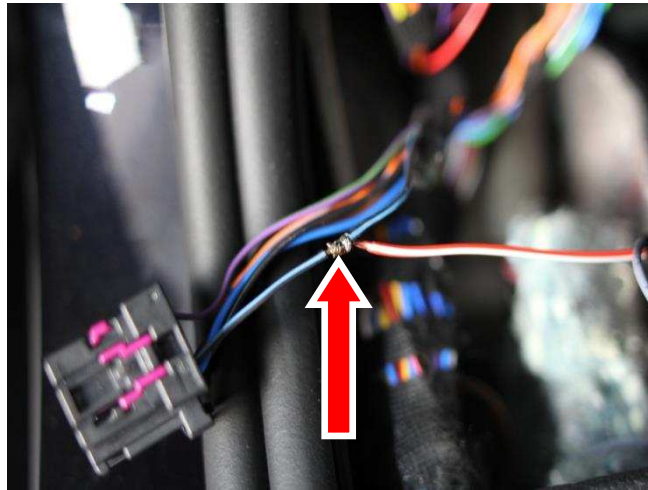


Fig. 3



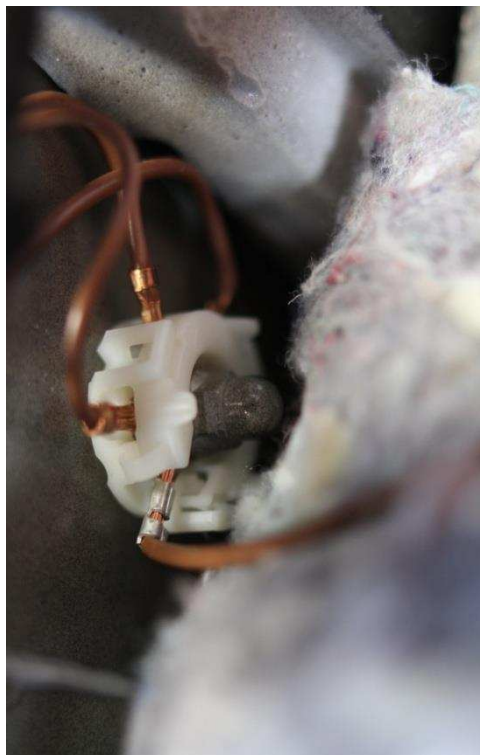
Disconnect the 17pin black plug from the junction and solder the line for ignition lead as mentioned below, Fig. 2 and 4.

**Ignition lead (red/white) - Pin 9 (black/blue)**  
**isolate the connections afterwards.**



*Fig. 4*

Now connect the cable for ground (brown). A suitable ground point is located at the A-column on the left, Fig 5.



*Fig. 5*



Connect the control unit and the Sound Booster module and mount them to the A-column with fixing materials as shown, Fig. 6.



Fig. 6

Now lay the wiring to the back of the car. The cable outlet is located at the left rear wheel house, Fig. 9. The wiring should be underneath the kicking plates, Fig. 7 and 8.



Fig. 7



Fig. 8



Fig. 9

Remove the sealing and pass the wires through the hole. Seal the cable outlet after that, Fig. 9

Now cut the exhaust pipe with an angle grinder and mount the external sound generator with the clamp, as shown with Fig. 10.

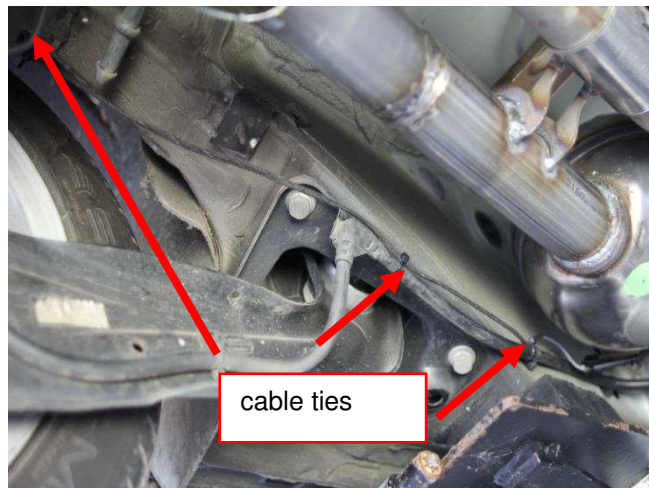
**ATTENTION: Cut the exhaust pipe approx. 15 cm behind the first bend!**



separation  
point

*Fig. 10*

Lay the cable to the external sound generator and connect it. Fix the cable with cable ties, Fig. 11



cable ties

*Fig. 11*

As an additional safeguard the included steel cable and the associated clip must be attached to the sound generator and at a suitable location on the vehicle. This is an additional security, in case of losing the fixing screw by vibrations.

For attaching the sound generator use suitable screws which can withstand a high load. To avoid losing the screws by vibrations, secure the screws with suitable workshop material. Check periodically the stability of the noise generator and tighten the screws if necessary. In the case of a non-compliance, we assume no liability for any damages.

Finally mount the push button for the sound profile selection, underneath the dashboard, Fig. 12

**ATTENTION:** For drilling you need a 7mm drill!



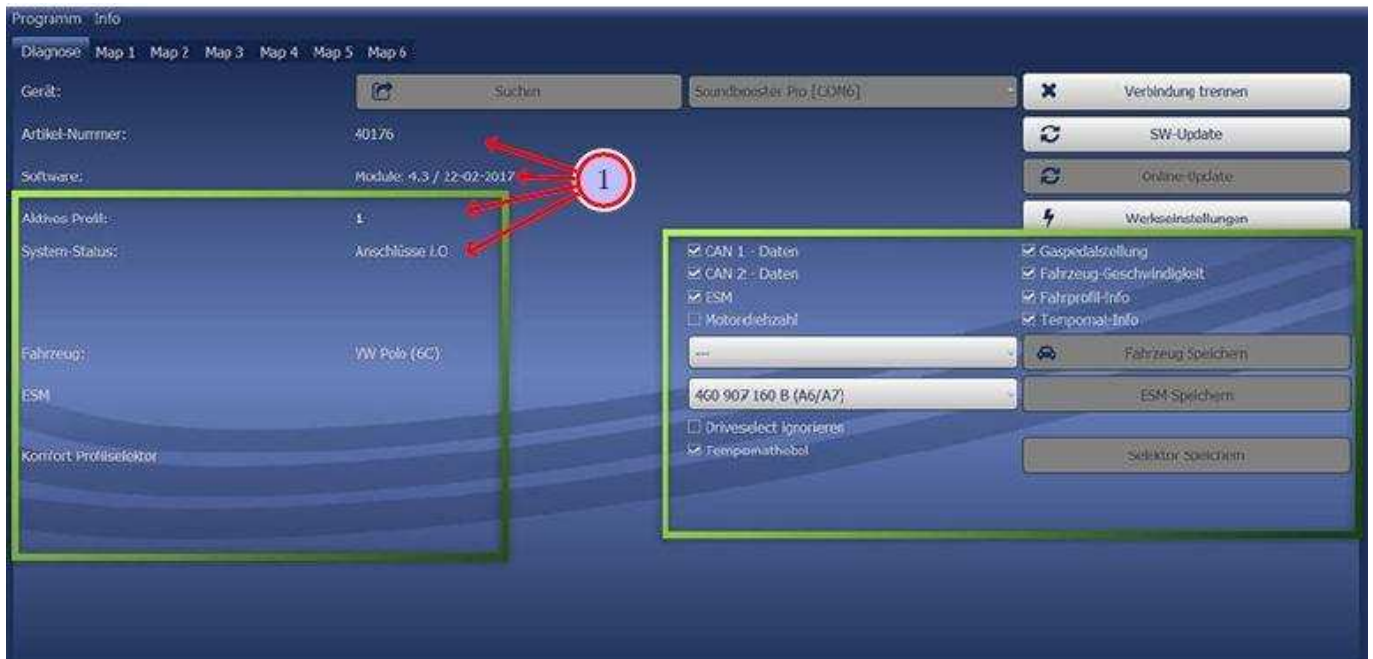
*Fig. 12*

The re-assembly takes place appropriately in a backward sequence.

You can choose 6 profiles by using the supplied button - in level 1-3 you will hear a decent sound, in level 4-6 a powerful V6/V8 sound.



## Software



If the system does not work after you have installed everything, please check by having a look on to the following Link: <https://www.sound-booster.com/en/debugging.html> if everything is correct as described. For the further commissioning or debugging, our Sound Booster Software for PC / Mac should be used:

**Step 1:** Download the appropriate software via the following link: <https://www.sound-booster.com>.

**Step 2:** Turn the ignition of the vehicle on and only then connect the PC / Mac with a USB-cable with our module. It is important here to make sure previously that plus and minus are connected correctly. If this is not the case, a damage at the computer or at the control unit can result.

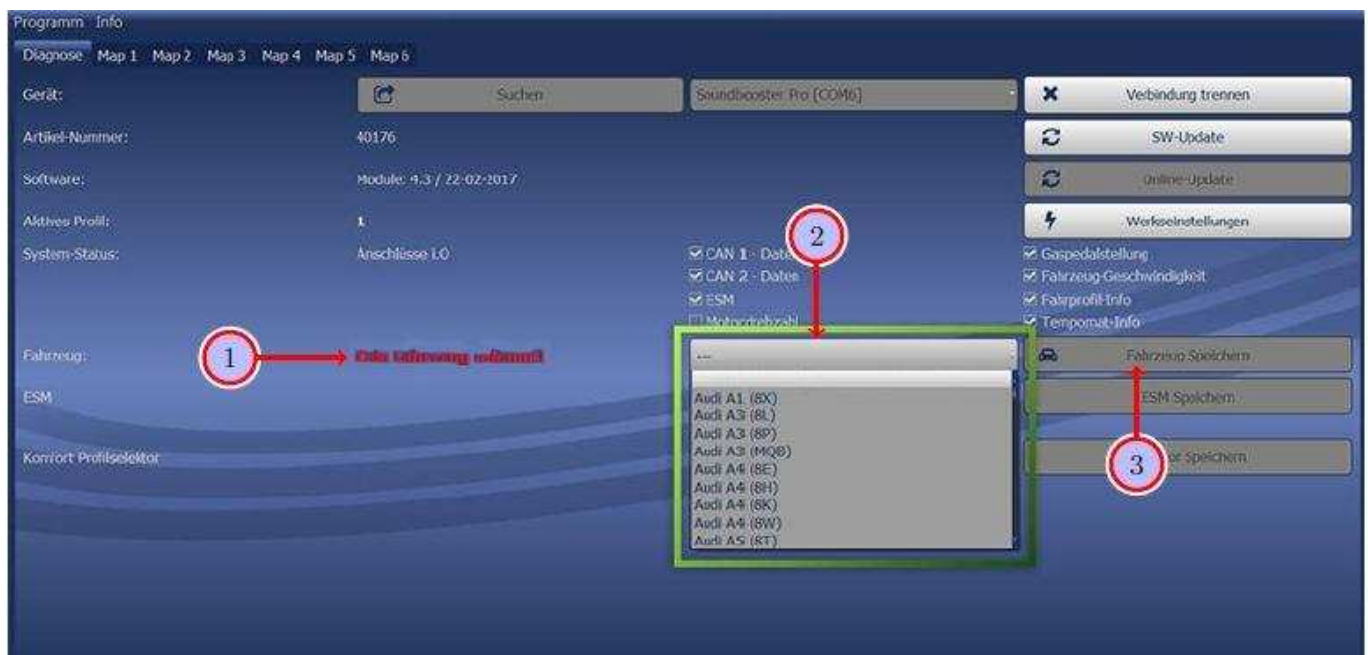
**Step 3:** Start the downloaded software and first click on search and afterwards on connect. You will be forwarded automatically to the diagnosis side, on which you can see the following things at a glance:

**Software:** Software version / creation date

**Active profile:** The actually activated profile is indicated here.

**Vehicle:** The automatically identified vehicle is indicated here.

**System Status:** You can see here, if the connections are correct.

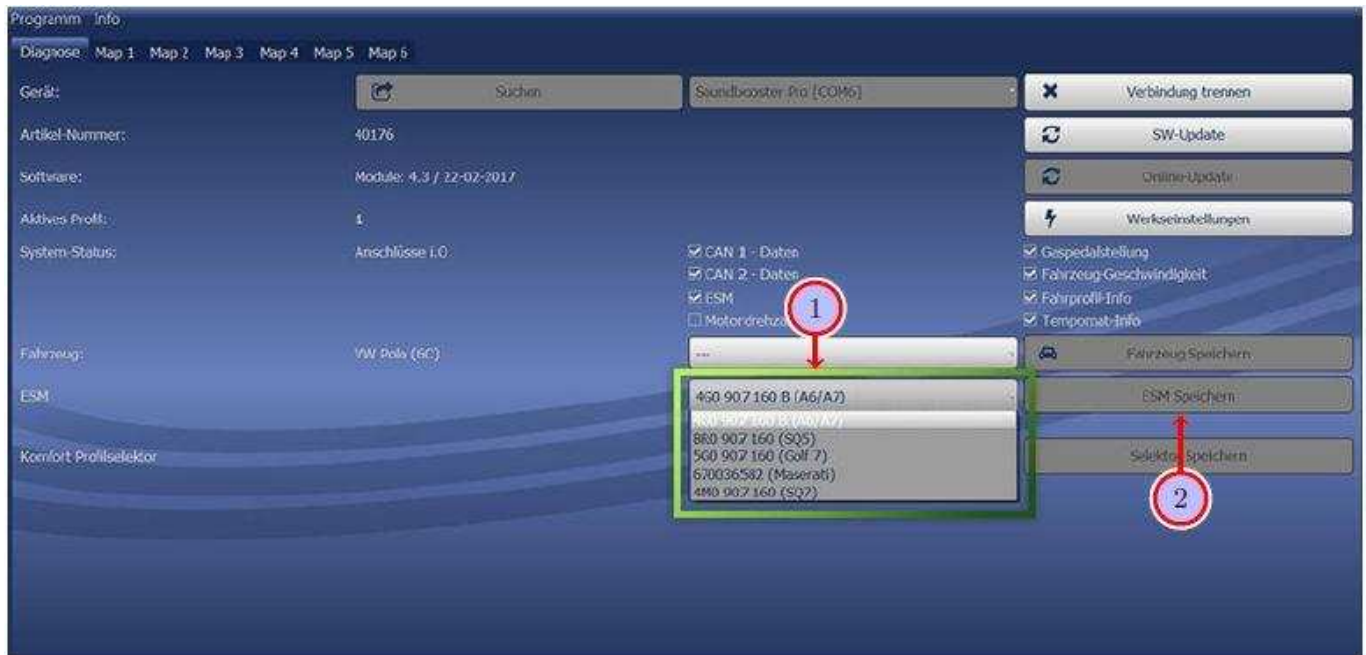


If no current vehicle is identified (see point 1), you have to select the vehicle via the Manual Selection as follows:

Open the dropdown-menu (see point 2), search for your vehicle and select it.

Click on Save Car to save the vehicle on the module permanently.

If you don't find your vehicle in this list, it is possibly that the software has to be adapted to your vehicle. For this, please contact us via e-mail: [info@kufatec.de](mailto:info@kufatec.de) or by phone: +49 (0) 4551 / 80 810 888. We will make an appointment with you, at which we will adapt the software to your vehicle by Team Viewer (telemaintenance).



You also need to check if the right ESM is selected in our software:

Open the dropdown-menu (see point 1), search for the correct ESM and select it.

Click on Save ESM to save the ESM on the module permanently.

If you, for example, has ordered a complete set with Audi control unit you need to choose as ESM 4G0 907 160 B (A6/A7). If you install the Maserati Control unit you need to choose the ESM 670036582 (Maserati)  
If the system does not work after all please get in contact with us via e-mail: [info@kufatec.de](mailto:info@kufatec.de) or by phone: +49 (0) 4551 / 80 810 888. We will check the issue as soon as possible.